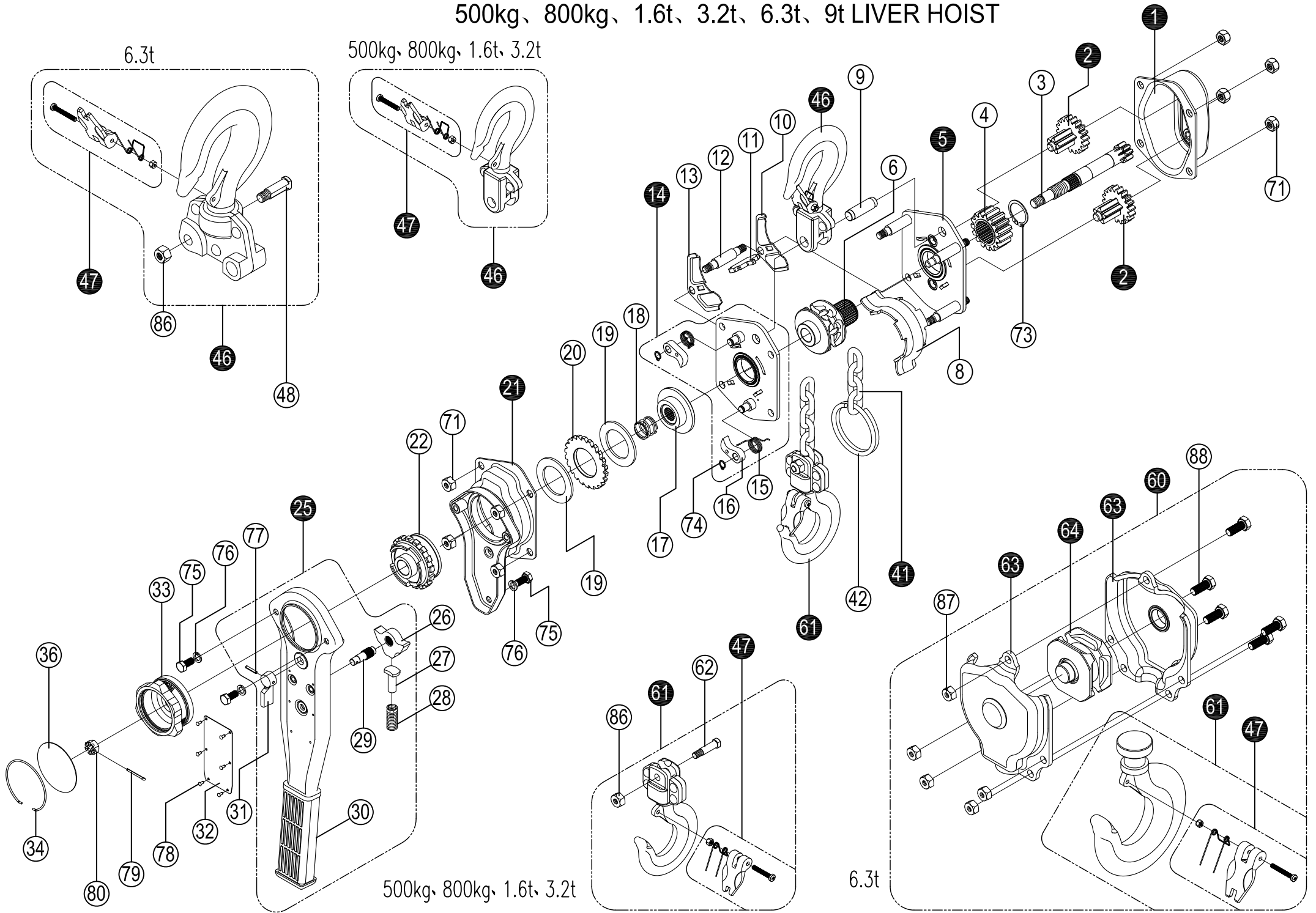


500kg、800kg、1.6t、3.2t、6.3t、9t LIVER HOIST

6.3t

500kg、800kg、1.6t、3.2t





Work made easy.

HOISTING & LIFTING

Prod. Id	Description	Pos
4363101	S2/LH-500KG-1 Gear cover assy	1
4363102	S2/LH-500KG-2 Disc gear assy	2
4363103	S2/LH-500KG-3 Drive shaft	3
4363104	S2/LH-500KG-4 Splined gear	4
4363105	S2/LH-500KG-5 Right side plate assy	5
4363106	S2/LH-500KG-6 Load chain sprocket	6
4363108	S2/LH-500KG-8 Chain guide	8
4363109	S2/LH-500KG-9 Top hook shaft	9
4363110	S2/LH-500KG-10 Chain leader A	10
4363111	S2/LH-500KG-11 Chain stripper	11
4363112	S2/LH-500KG-12 Stay bolt B	12
4363113	S2/LH-500KG-13 Chain leader B	13
4363114	S2/LH-500KG-14 Left side plate assy	14
4363115	S2/LH-500KG-15 Pawl spring	15
4363116	S2/LH-500KG-16 Pawl	16
4363117	S2/LH-500KG-17 Break seat	17
4363118	S2/LH-500KG-18 Free spring	18
4363119	S2/LH-500KG-19 Friction plates (Pair)	19
4363120	S2/LH-500KG-20 Ratchet wheel	20
4363121	S2/LH-500KG-21 Ratchet wheel cover assy	21
4363122	S2/LH-500KG-22 Changeover ratchet wheel	22
4363123	S2/LH-500KG-FRICTION DISC A overload	
4363124	S2/LH-500KG-FRICTION DISC B overload	
4363125	S2/LH-500KG-25 Handle assy	25
4363126	S2/LH-500KG-26 Changeover pawl	26
4363127	S2/LH-500KG-27 Spring pin	27
4363128	S2/LH-500KG-28 Changeover spring	28
4363129	S2/LH-500KG-29 Selector plate shaft	29
4363130	S2/LH-500KG-30 Hand rubber grip	30
4363131	S2/LH-500KG-31 Selector plate	31
4363132	S2/LH-500KG-32 Namelate	32
4363133	S2/LH-500KG-33 Hand wheel	33
4363134	S2/LH-500KG-34 Steel wire retainer	34
4363136	S2/LH-500KG-36 Hand wire retainer	36
4363142	S2/LH-500KG-42 Chain ring	42
4363146	S2/LH-500KG-46 Top hook assy	46
4363147	S2/LH-500KG-47 Safety latch assy	47
4363161	S2/LH-500KG-61 Bottom hook assy	61
4363162	S2/LH-500KG-62+86 Bottom hook pin+nut	62
4363171	S2/LH-500KG-71 Metal lock nut M8	71
4363173	S2/LH-500KG-73 Circlip 26	73
4363174	S2/LH-500KG-74 Circlip 8	74



Work made easy.

HOISTING & LIFTING

4363175	S2/LH-500KG-75 Bolt M6×10	75
4363176	S2/LH-500KG-76 Light spring washer 6	76
4363177	S2/LH-500KG-77 spring pin 3×18	77
4363178	S2/LH-500KG-78 Nameplate rivet 2.5×6	78
4363179	S2/LH-500KG-79 Split pin 2.5×25	79
4363180	S2/LH-500KG-80 Hexagon recess nut M10	80