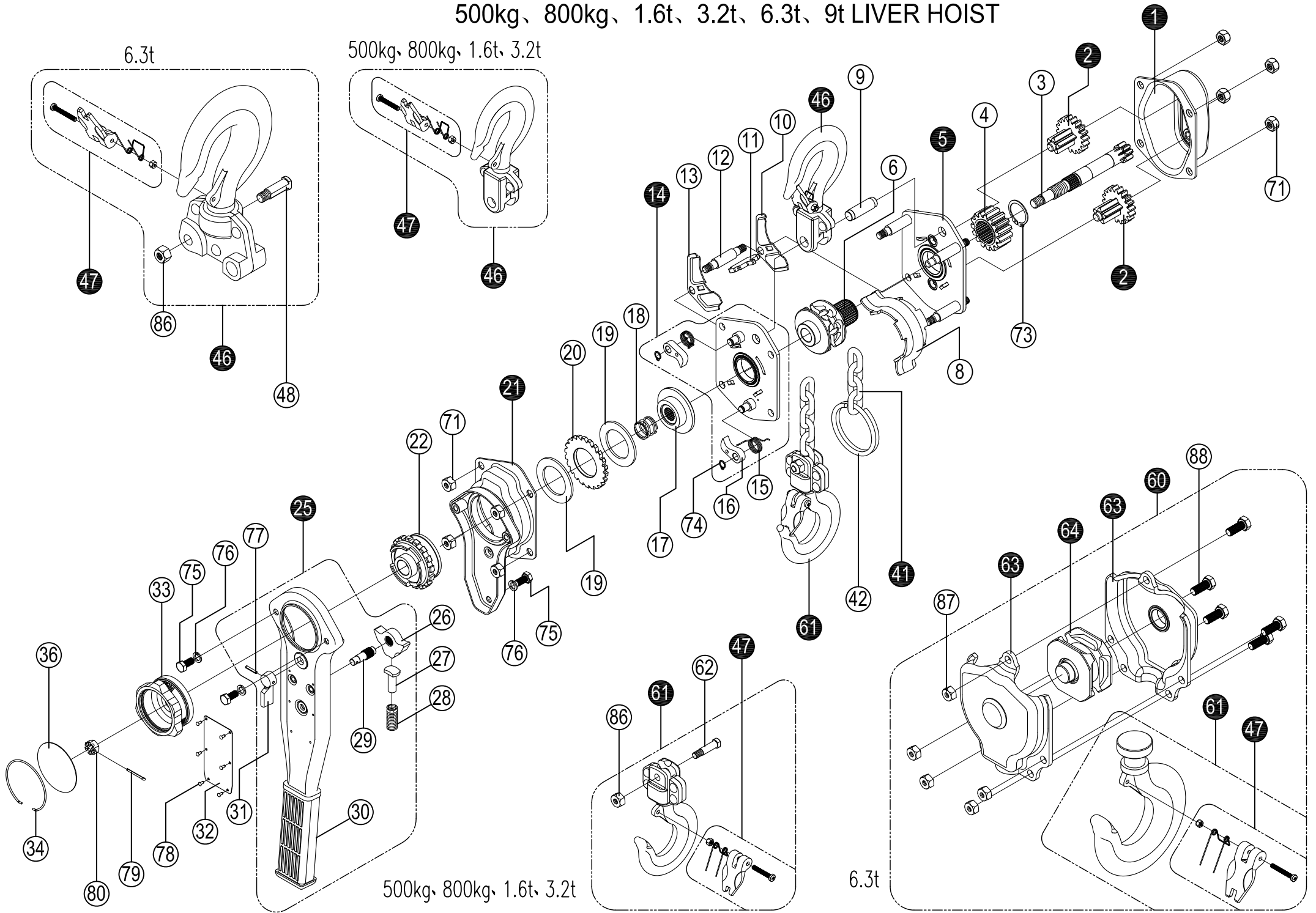


500kg、800kg、1.6t、3.2t、6.3t、9t LIVER HOIST

6.3t

500kg、800kg、1.6t、3.2t



500kg、800kg、1.6t、3.2t

6.3t



Work made easy.

HOISTING & LIFTING

Prod. Id	Description	Pos
4363201	S2/LH-800KG-1 Gear cover assy	1
4363202	S2/LH-800KG-2 Disc gear assy	2
4363203	S2/LH-800KG-3 Drive shaft	3
4363204	S2/LH-800KG-4 Splined gear	4
4363205	S2/LH-800KG-5 Right side plate assy	5
4363206	S2/LH-800KG-6 Load chain sprocket	6
4363208	S2/LH-800KG-8 Chain guide	8
4363209	S2/LH-800KG-9 Top hook shaft	9
4363210	S2/LH-800KG-10 Chain leader A	10
4363211	S2/LH-800KG-11 Chain stripper	11
4363212	S2/LH-800KG-12 Stay bolt B	12
4363213	S2/LH-800KG-13 Chain leader B	13
4363214	S2/LH-800KG-14 Left side plate assy	14
4363215	S2/LH-800KG-15 Pawl spring	15
4363216	S2/LH-800KG-16 Pawl	16
4363217	S2/LH-800KG-17 Break seat	17
4363218	S2/LH-800KG-18 Free spring	18
4363219	S2/LH-800KG-19 Friction plates (Pair)	19
4363220	S2/LH-800KG-20 Ratchet wheel	20
4363221	S2/LH-800KG-21 Ratchet wheel cover assy	21
4363222	S2/LH-800KG-22 Changeover ratchet wheel	22
4363223	S2/LH-800KG-FRICTION DISC A overload	
4363224	S2/LH-800KG-FRICTION DISC B overload	
4363225	S2/LH-800KG-25 Handle assy	25
4363226	S2/LH-800KG-26 Changeover pawl	26
4363227	S2/LH-800KG-27 Spring pin	27
4363228	S2/LH-800KG-28 Changeover spring	28
4363229	S2/LH-800KG-29 Selector plate shaft	29
4363230	S2/LH-800KG-30 Hand rubber grip	30
4363231	S2/LH-800KG-31 Selector plate	31
4363232	S2/LH-800KG-32 Namelate	32
4363233	S2/LH-800KG-33 Hand wheel	33
4363234	S2/LH-800KG-34 Steel wire retainer	34
4363236	S2/LH-800KG-36 Hand wire retainer	36
4363242	S2/LH-800KG-42 Chain ring	42
4363246	S2/LH-800KG-46 Top hook assy	46
4363247	S2/LH-800KG-47 Safety latch assy	47
4363261	S2/LH-800KG-61 Bottom hook assy	61
4363262	S2/LH-800KG-62+86 Bottom hook pin+nut	62
4363271	S2/LH-800KG-71 Metal lock nut M8	71
4363273	S2/LH-800KG-73 Circlip 26	73
4363274	S2/LH-800KG-74 Circlip 8	74



Work made easy.

HOISTING & LIFTING

4363275	S2/LH-800KG-75 Bolt M6×10	75
4363276	S2/LH-800KG-76 Light spring washer 6	76
4363277	S2/LH-800KG-77 spring pin 3×18	77
4363278	S2/LH-800KG-78 Nameplate rivet 2.5×6	78
4363279	S2/LH-800KG-79 Split pin 2.5×25	79
4363280	S2/LH-800KG-80 Hexagon recess nut M10	80